

IV Consumables

Where Precision Meets Protection

A complete portfolio of IV consumables meticulously designed to help protect patients, support clinicians, and streamline care—from insertion to infusion.

icumedical
human connections



We Design the Details

That Help Protect Every Infusion

From disinfecting caps and vascular access, to clinically-preferred Clave™ needlefree connectors incorporated into a broad portfolio of IV sets, we deliver tools that help reduce infection risk, simplify protocols, and support standardization across your facility.

Our IV consumables portfolio is designed to help you standardize with purpose, aligning technology, practice, and safety across your entire facility. We call it **Smart Standardization**—a clinically grounded process that goes beyond a procurement strategy to make standardization a care strategy. We align tools with your actual workflows—not just contracts.



A clinically driven IV consumables portfolio designed to support safer care, smarter workflows, and system-wide consistency.



IV Sets and Connectors

Standardize smart.
Connect with confidence.

Advanced Clave™ IV connectors provide a clinically preferred barrier to bacteria. Incorporated into a broad portfolio of sets, we help you safeguard and enhance IV therapy across care.



Disinfecting Caps

Consistent disinfection.
Simplified compliance.

SwabCap™ and SwabTip™ disinfecting caps support protocol adherence and infection prevention with easy, continuous protection for every IV connection.



Renal Connectors and Devices

Designed for dialysis.
Proven to reduce risk.

Our renal connectors and caps—including ClearGuard™ HD antimicrobial barrier caps—are designed to reduce contamination at the catheter hub and help lower the risk of bloodstream infections in hemodialysis.



Vascular Access

Match every patient.
Support every preference.

A full range of sizes and safety features—from 26G catheters to midlines—designed to support clinician workflow, enhance insertion success, and improve efficiency.



It starts with the right connection. The original. And still the standard.

Clave technology was the first needlefree connector of its kind. Engineered from evidence, it remains the clinically preferred choice for one reason: performance.

Peer-reviewed evidence shows design features used in Clave technology transfer less bacteria than other connector designs. In high-volume hospitals that standardized to Clave, a secondary peer-reviewed analysis reported a 19% lower relative risk of CLABSI compared to hospitals that use other connector designs. Not luck. It's design doing its job.^{1,2}

And because it's available across one of the industry's broadest IV set portfolios, Clave helps you extend that protection to every patient, in every corner of care.

Warning: Clave connectors may be incompatible with some male-luer connectors including prefilled glass syringes. To avoid damage to the Clave or syringes or male luers which may result in delays of medication administration and possible serious adverse events, users should confirm mating luers or syringes have an internal diameter range of 0.062" to 0.110". Check the internal diameter of the male-luer connector of the mating syringe prior to using it to access the Clave. Products outside of these dimensional tolerances should not be used.

We've produced billions of Clave connectors. *But Clave is one of a kind.*

The design features recommended in the INS Infusion Therapy Standards of Practice have long been part of Clave's DNA, reflecting the principles of safe, effective IV access—proven over decades of clinical use.

- › Lower relative CLABSI risk compared to other connectors¹
- › Prevent microbial ingress for 7 days
- › 400 PSI compatible
- › No required changeout after use with blood



Silicone Seal and Internal Cannula Minimizes Point of Entry for Bacteria

Specifically designed to minimize contact between the connector's external surface and the internal fluid path upon luer activation, Clave needlefree IV connectors minimize entry points for bacteria. Several studies have attributed this feature to a reduction in bacterial contaminants passed through the connector.^{1,2,3,4,5}

Split Septum

Clave's normally closed, swabbable split septum design is a preferred feature for needlefree connectors.^{5,6}

Straight Fluid Path

Clave's straight fluid path allows for efficient clearing of medications, blood, and blood residual with low flush volumes.^{7,8}

Minimal Priming Volume

Clave's minimal priming volume allows for lower flush volumes.

Clear Housing

A clear housing lets you see whether you have completely flushed the connector after blood draws or administration.

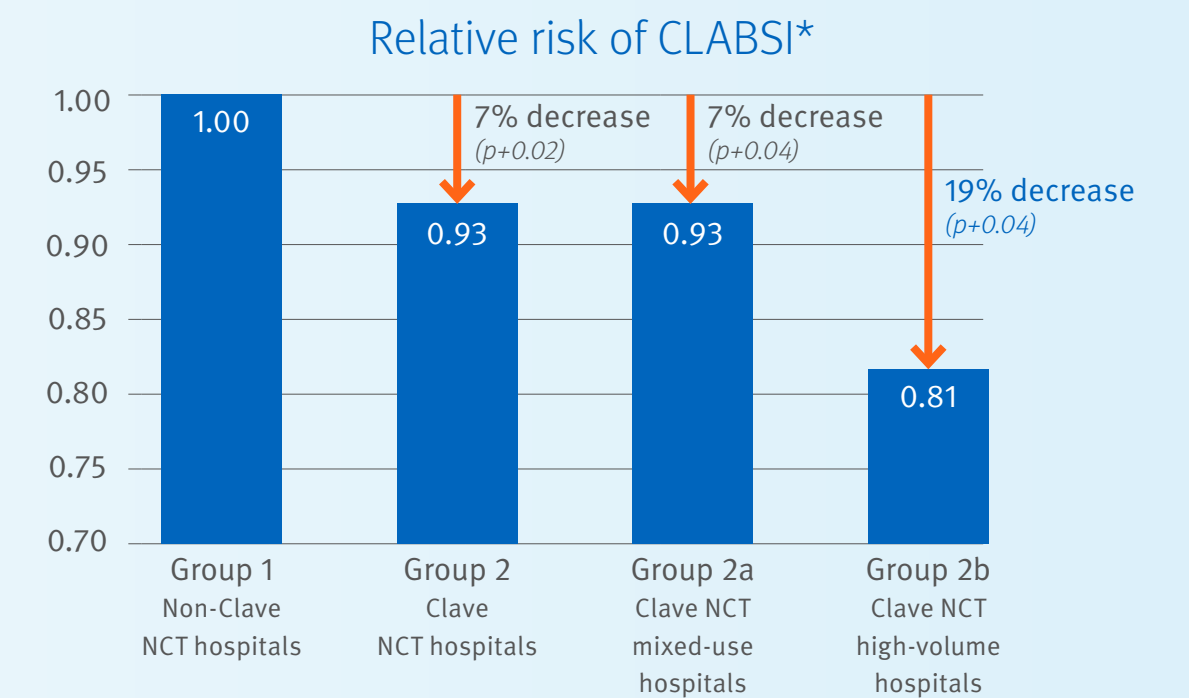


Safety you can see in the data.

Peer-reviewed data confirms what clinicians have trusted for decades: Clave—in and of itself—is an effective strategy for reducing CLABSI risk.

Reduce the relative risk of CLABSI¹

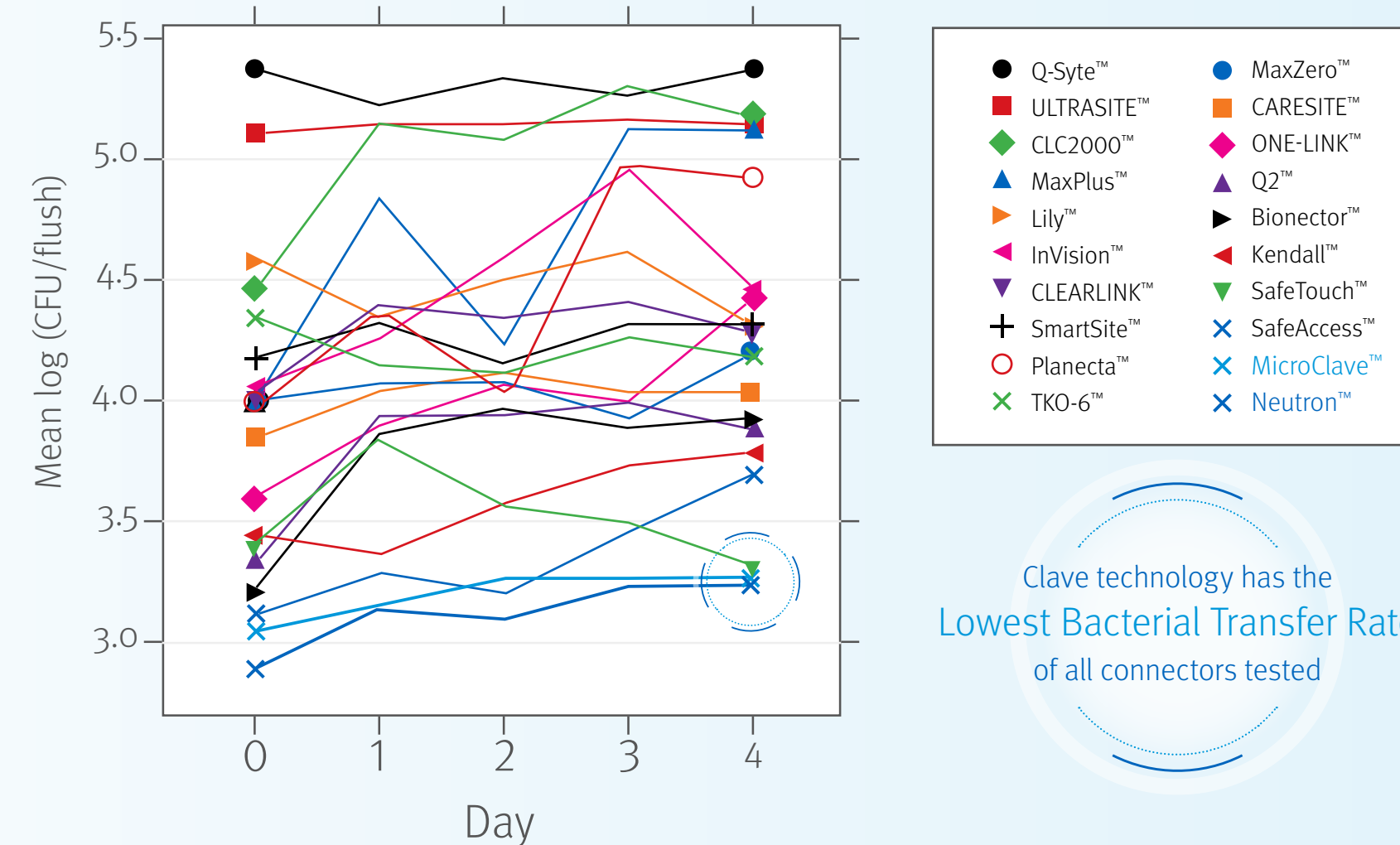
A comprehensive study published in the Journal of Vascular Access demonstrates that Clave IV connectors significantly reduce the risk of CLABSI. Among Clave high-volume hospitals, an estimated 563 CLABSIs and 84 related deaths were avoided.



Design makes the difference

In a peer-reviewed comprehensive study comparing 20 different needlefree IV connectors, connectors featuring Clave technology were *shown to have a significantly lower bacterial transfer rate than any of the other connectors tested.*²

Bacterial transfer rate comparison of needlefree connectors^{2**}



Clave technology has the Lowest Bacterial Transfer Rate of all connectors tested

*chart based on study data
**graph based on study data

One connector, every connection.

With Clave's extensive IV portfolio, you can confidently use the same proven connector in every patient scenario—from delicate NICU infusion to complex critical care and anesthesia setups. Standardizing with Clave means fewer SKUs, simplified protocols, reduced clinical training, and less confusion. It all adds up to safer, simple care. And greater peace of mind.



NICU



Oncology



General Floor



Anesthesia

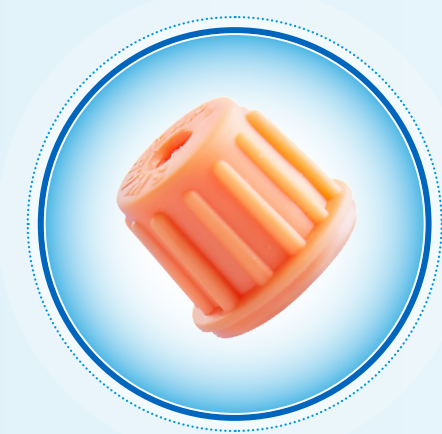
Improve efficiency and reduce setup time at the point of care by using procedure-ready IV sets that match your clinical need

- › Avoid assembling multiple components at the bedside
- › Limit inventory of different set SKUs to free up shelf space and save time searching for the set you need



Built-in protection for better swabbing compliance

Swabbing protocols matter—but so does real-world workflow. Our Clave-compatible disinfecting caps provide continuous, passive protection that helps improve compliance, reduce contamination, and simplify disinfection across your hospital.



SwabCap™ Disinfecting Cap for Needlefree Connectors

SwabCap twists onto needlefree connectors to deliver continuous disinfection for up to 7 days if left in place. Its bright orange design acts as a visual cue to reinforce compliance, while the 70% IPA inside kills bacteria in just 30 seconds—supporting protocol adherence and helping prevent bloodstream infections.



SwabTip™ Male-Luer Disinfecting Cap

SwabTip is designed to disinfect and shield male luers, helping reduce contamination risk and support consistent aseptic technique.

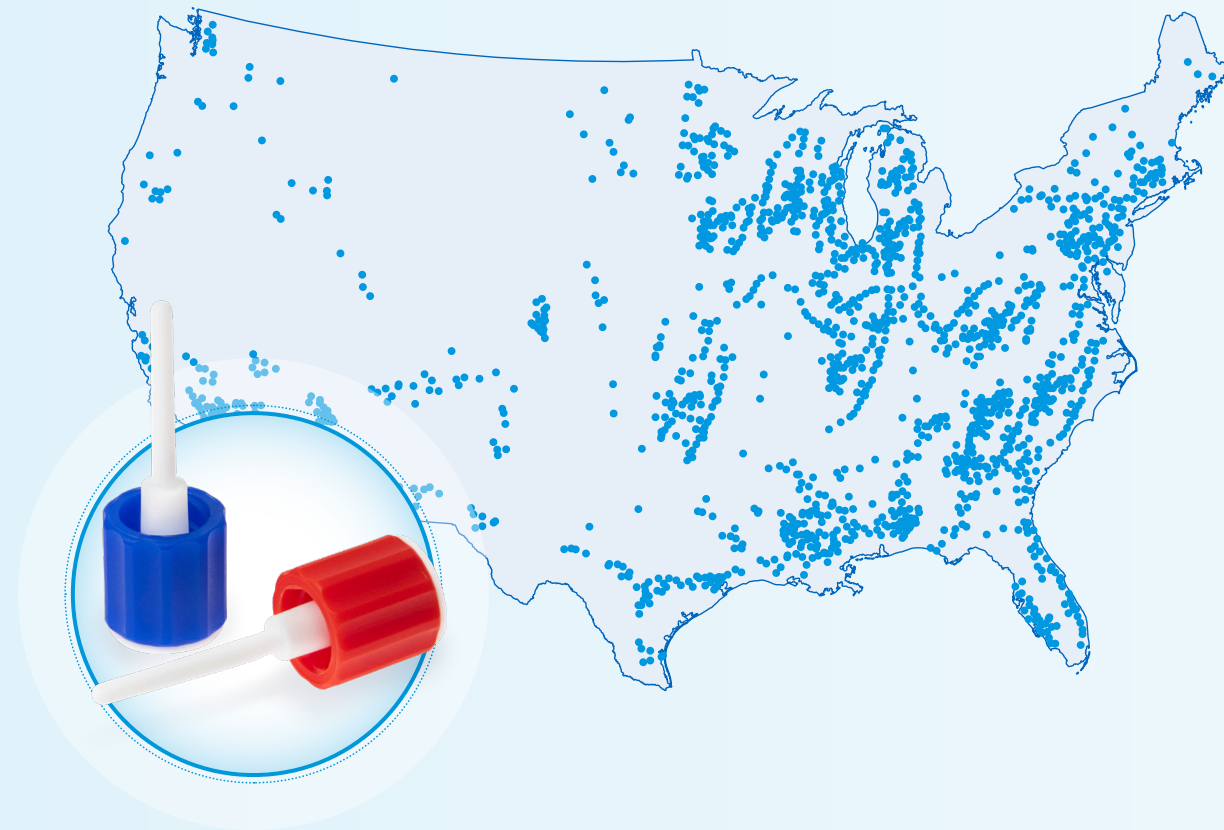


High-performance protection for high-risk patients

Dialysis patients face some of the highest bloodstream infection risks in healthcare. Our renal consumables are specifically designed to help protect hemodialysis catheter hubs from contamination—supporting safer care for your most vulnerable patients.

ClearGuard™ HD Antimicrobial Barrier Caps for Hemodialysis Catheters

Clinically proven to reduce the rate of CLABSI in hemodialysis catheter patients by 63%, ClearGuard HD is the first and only antimicrobial barrier cap designed to kill bacteria inside and around the hemodialysis catheter hub.^{9,10} With a chlorhexidine-coated rod that elutes into the lock solution, ClearGuard HD offers protection between treatments—when patients are most vulnerable.



Over 50M treatments at
5,200 outpatient clinics and
over 1,700 hospitals



Tego™ Needlefree connector designed for hemodialysis catheters

Protect your patients' catheters from contamination by creating a closed system when attached to the hub of a hemodialysis catheter.

Help minimize overall costs while enhancing patient safety across the continuum of care

Reduce catheter occlusions and associated treatment costs

Preventing blood reflux with Clave Neutron has been shown to help reduce central line catheter occlusions by up to 50%¹¹, allowing a hospital that places 2,000 central lines a year to potentially save more than \$266,000 by lowering tPA costs, PIVC replacement costs, and length of stay.

A hospital placing 2,000 central lines a year could save
\$266k
a year by switching to Clave Neutron

Get safety that saves more than lives

One study showed that 1,288 hospitals with high-volume usage of Clave were estimated to have collectively avoided 84 CLABSI-related deaths and saved \$27 million annually. Potential savings come from reducing costly complications like bloodstream infections, occlusions, and the need for thrombolytics—showing how smarter design pays off in both safety and efficiency.

\$27 million
estimated cost savings of the Clave hospitals

Reduce costly central-line associated bloodstream infections

CLABSIs can be very expensive, with an estimated increase in healthcare costs of approximately \$27,232–\$68,983, with an average of \$48,108 per infection.¹² ClearGuard HD antimicrobial barrier caps have been clinically proven to reduce the rate of CLABSIs by up to 63% in patients with hemodialysis catheters.⁹

One hospital system achieved a 66% reduction in hemodialysis-related CLABSIs and saved their health system over
\$1.6 million
in additional care costs.¹³

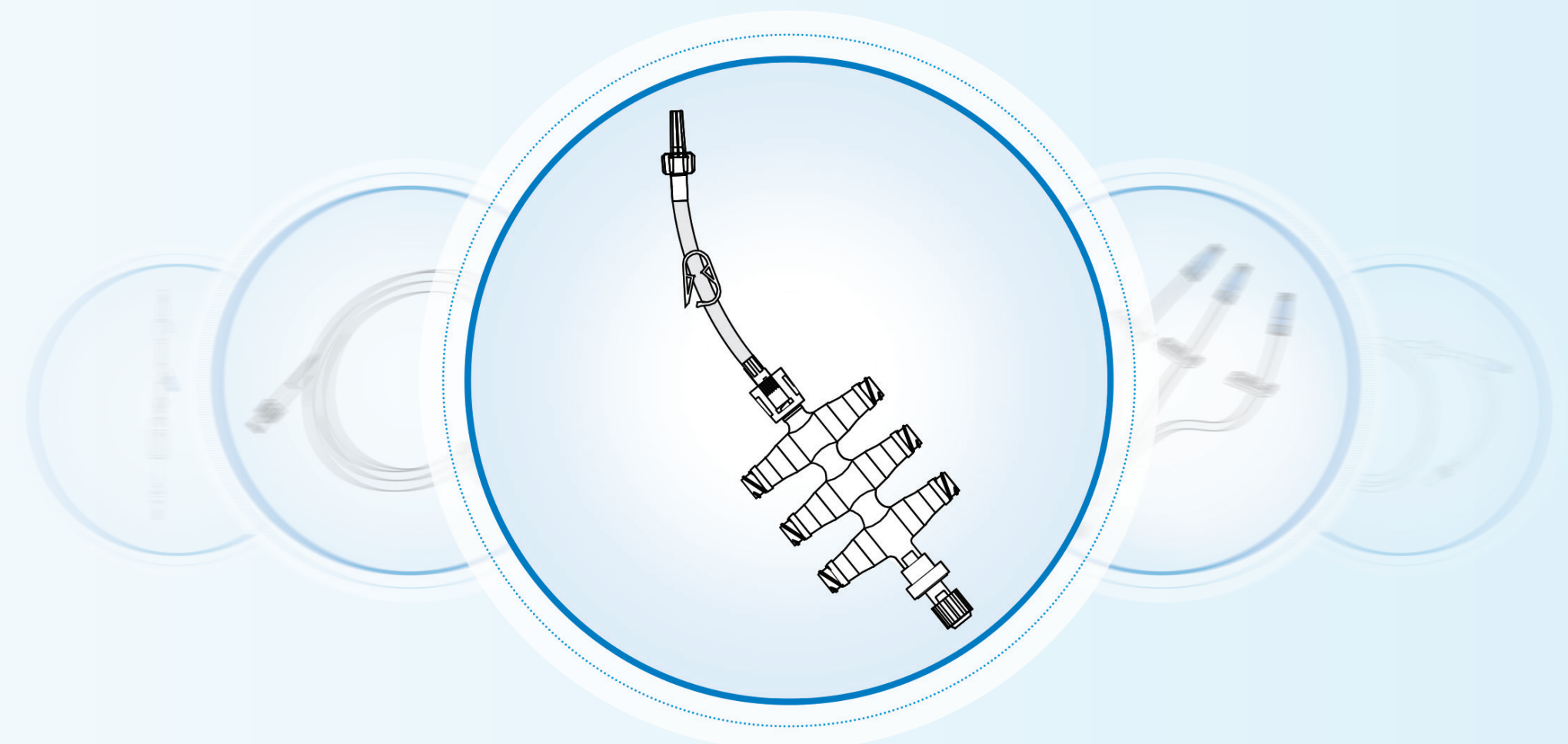


Smart standardization, built for how you deliver care.

We help your teams streamline SKUs while aligning with clinical best practice, helping ensure what you stock truly matches your needs. Smart standardization reduces product redundancies, improves workflow, and drives cost savings.



See how you can create efficiency, simplicity, and IV set supply stability with our Portfolio Optimization Program.





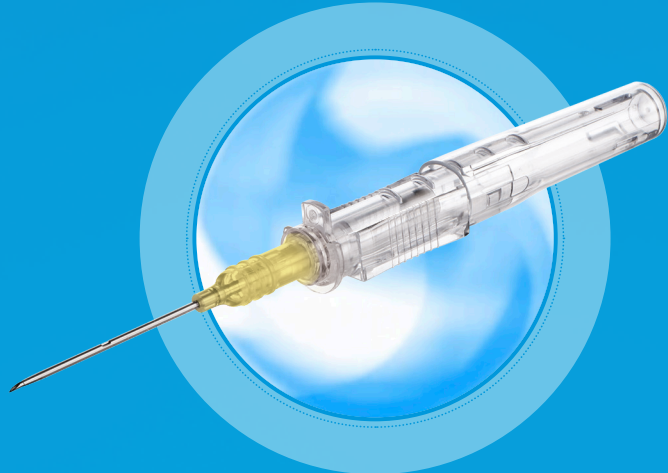
Put Precision into Practice

with the vascular access options *they* need

No two patients are the same, and neither are their vascular access needs. From a unique range of peripheral catheters, implantable ports, and quality blood sampling, we aspire to be a true vascular access partner with a portfolio designed to help you deliver precise patient care.

Put Precision into Practice

with the vascular access options *they* need



Peripheral IV Catheters

Match clinician preference with our selection of push button, slide safety, closed system, and blood control PIVC options. Match patient need with a variety of gauge and length options.



Long PIVCs

Provide precision care for difficult venous access patients with long-length PIVCs—with and without guidewire assist.



Pediatric and NICU PIVCs

Get a variety of options for small-gauge access for your most delicate patients.



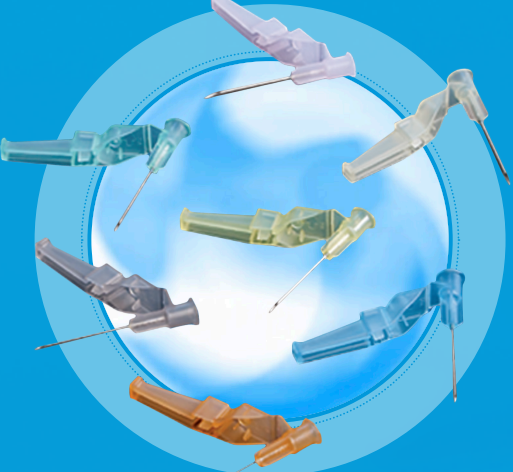
Infection-Resistant Midlines

Protect patients by reducing infection risk with our midline shown to inhibit bacterial attachment (in vitro)¹⁵ and reduce thrombus formation (in vivo).¹⁴



Central Catheters

Enhance patient care, convenience, and comfort for central line-indicated therapies with a broad range of implantable ports and port access needles.



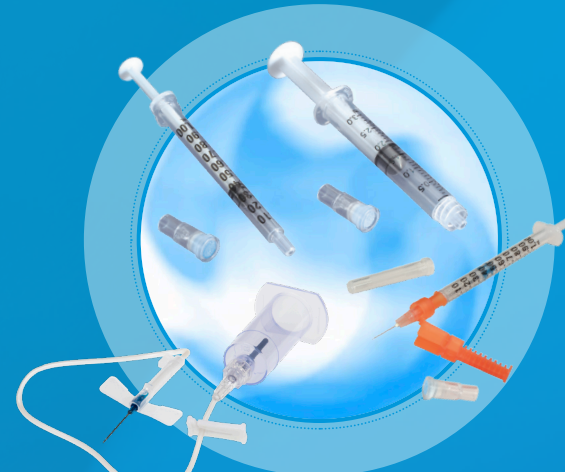
Hypodermics

A selection of injections and sharps safety accessories.



Subcutaneous Delivery

Single-use subcutaneous infusion set for use in a variety of infusion therapies.



Diagnostic Stewardship

Get the blood sample you need a full range of blood collection and arterial blood sampling devices.

Partnering to help survey, standardize, and simplify infusion therapy

While your teams work hard to respond to the growing complexities of modern care, we understand your organization may continue to face a range of infusion challenges—from supply chain inefficiencies to elevated bloodstream infection rates and other safety concerns. *That's where we come in.*



ICU Medical Infusion Assessment Program:
Endorsed by Infusion Nurses Society



Let's move IV therapy forward—together.

Collaborative review of goals

From infection control protocols to supply chain strategies, your Infusion Assessment Program begins with collaboration to help us understand current infusion-related processes, systems, and goals for your facility, as well as how they match the specific needs of each unit.

On-site unit-by-unit assessment

On-site unit-by-unit assessments are scheduled and conducted to help us align the different needs of each department with overarching hospital goals. By identifying how well current protocols and products support your goals, we can then provide product strategies designed to improve infusion therapy across the entire hospital.

Reporting, recommendations, and road map

We deliver a comprehensive report of findings, evidence-based recommendations, and a road map to help you standardize technologies across departments. We'll also help simplify your supply by ensuring each department has what it needs without excess.



ICU Medical Infusion Assessment Program:
Endorsed by Infusion Nurses Society



Scan to learn more





In-Service Training Videos



Step-by-Step Instructional Posters



Live Clinical Training with Documentation

ICU Medical and you

A commitment to exceptional ongoing technical support and clinical education

Our commitment to you doesn't end with the purchase.

We provide a dedicated support organization with a wealth of knowledge, resources, and technical training opportunities to help you maximize the value of your investment in ICU Medical products.

When you choose ICU Medical, you get a true partner who will be with you every step of the way, offering:

- › Best-in-class technical and clinical in-servicing
- › Dedicated clinical nursing and product team specialists
- › Personalized instructional materials
- › No-obligation clinical reviews to optimize your IV set portfolio

References

1. Ryder M, Battle J. Choice of needleless connector technology as a risk reduction strategy for catheter related bloodstream infection, mortality, and cost: A secondary data analysis. *J Vasc Access*. 2025 Jul;26(4):1194-1205. doi: 10.1177/11297298241261951. Epub 2024 Aug 3. PMID: 39097791; PMCID: PMC12260206.
2. Ryder, M., DeLancey-Pulcini, E., Parker, A., & James, G. (2023). Bacterial transfer and biofilm formation in needleless connectors in a clinically simulated in vitro catheter model. *Infection Control & Hospital Epidemiology*, 1-9. doi:10.1017/ice.2023.60
3. Brown JD, Moss HA, Elliott TS. The potential for catheter microbial contamination from a needleless connector. *J Hosp Infect*. 1997.; 36:181-189.
4. Yebenes J, Delgado M, Sauca G, Serra-Prat M, Solsona M, Almirall J, et al. Efficacy of three different valve systems of needlefree closed connectors in avoiding access of microorganisms to endovascular catheters after incorrect handling. *Crit Care Med*. 2008;36: 2558–2561.
5. Bouza E, Munoz P, Lopez-Rodriguez J, et al. A needleless closed system device (Clave™) protects from intravascular catheter tip and hub colonization: a prospective randomized study. *J Hosp Infect*. 2003; 54:279-287.
6. Guidelines for the Prevention of Intravascular Catheter-Related Bloodstream Infections, 2011 (Updated Recommendations July 2017)
7. Data on file at ICU Medical. Low Volume Flush Characteristics of Unique Needlefree Connectors M1-1223 Rev. 1.
8. Breznock EM, DVM, PhD, Diplomate ACVS, Sylvia CJ, DVM, MS, BioSurg, Inc. The in vivo evaluation of the flushing efficiency of different designs of clear needlefree connectors, March 2011.
9. Brunelli, SM et al. Cluster-randomized trial of devices to prevent catheter-related bloodstream infection. *J Am Soc Nephrol*. 2018 Apr;29(4):1336-1343.
10. Hymes, JL et al. Dialysis catheter-related bloodstream infections: a cluster-randomized trial of the ClearGuard HD antimicrobial barrier cap. *Am J Kidney Dis*. 2017 Feb;69(2)220-227.
11. Observational In-Vivo Evaluation of the Neutron™ Needlefree Catheter Patency Device and its Effects on Catheter Occlusions in a Home Care Setting, 2011.
12. Zimlichman, E et al. Health care-associated infections: a meta-analysis of costs and financial impact on the US health care system. *JAMA Intern Med*. 2013;173(22):2039-2046 or Results. Content last reviewed November 2017. Agency for Healthcare Research and Quality, Rockville, MD. <https://www.ahrq.gov/hai/pfp/haccost2017-results.html>
13. Max Holder, MSN, RN, CRNI, NE-BC, VA-BC. Reducing Hemodialysis Catheter-Related Central Line-Associated Bloodstream Infections. <https://www.icumed.com/landing-pages/reducing-hemodialysis-clabsi-webinar/>
14. FDA-cleared 510(k) Powerwand has shown in vivo to be thromboresistant with respect to both thrombus on the surface of the catheter and thrombus on the wall of the vein, based upon 72-hour canine jugular vein thromboresistance studies. This per clinical in vivo evaluation does not necessarily predict clinical performance with respect to thrombus formation.
15. Pathak R, Bierman SF, d'Arnaud P. Inhibition of bacterial attachment and biofilm formation by a novel intravenous catheter material using an in vitro percutaneous catheter insertion model. *Med Devices (Auckl)*. 2018 Dec 19;11:427-432. doi: 10.2147/MDER.S183409. PMID: 30588133; PMCID: PMC6305250