



CADD™ and Portex™ Portfolio  
with the NRFit® Connector  
Product Catalogue

## CADD and Portex Portfolio with the NRFit Connector

In 2014, The Joint Commission released Sentinel Event Alert 53: Managing Risk During Transition to ISO Tubing Connector Standards. The ISO 80369-6 neuraxial connector standard was published in March 2016. The goal is to reduce the incidence of medical device misconnections by creating unique non-luer connectors for neuraxial procedures. The neuraxial non-luer connectors will be branded by all major manufacturers as NRFit connectors.

ICU Medical would like to help you to switch to the NRFit neuraxial non-Luer connector. We'll help make the transition easier by providing support, guidance and product expertise.

### A Familiar Way to Connect

The hubs and tapers of the NRFit connectors are smaller than those of standard luer connectors used commonly on many medical devices, but they operate in much the same way. Like standard luer connectors, NRFit connectors come together with a simple twist.



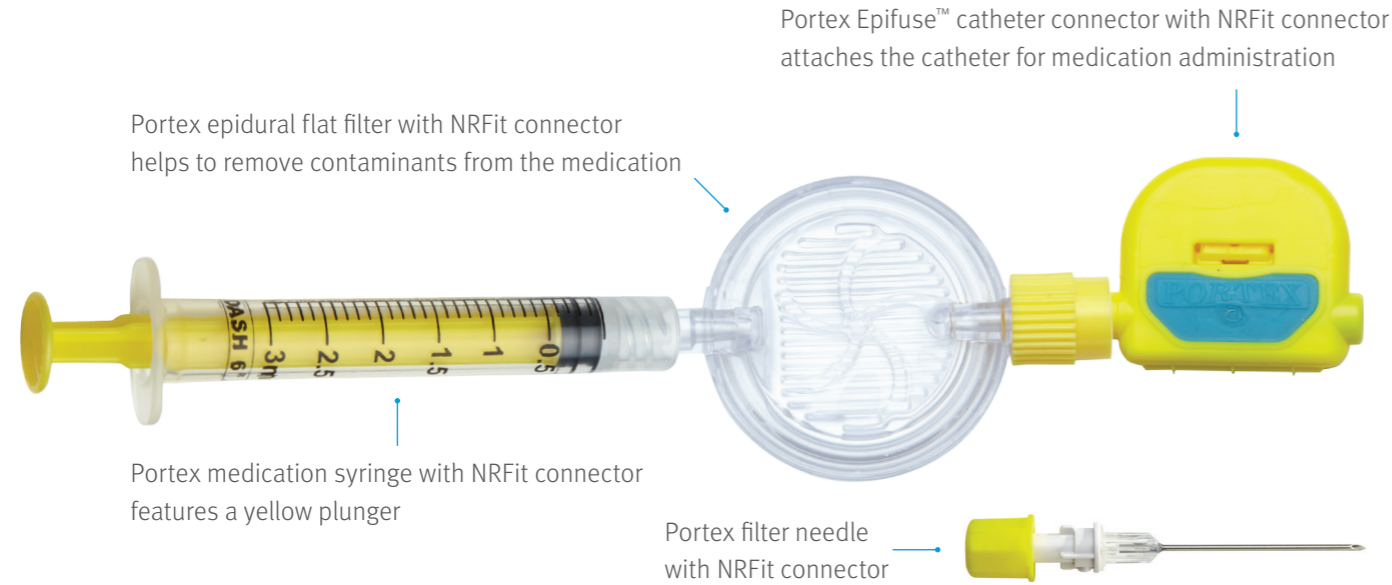
## Security from Pump to Patient

The CADD and Portex portfolio with the NRFit connector is an ISO 80369-6 compliant connection system intended to enhance patient safety through a reduction in the risk of misconnection, while minimising any change to clinical technique.



# Portex Portfolio with the NRFit Connector

## Complete Solutions for Epidural, Spinal and CSE Procedures



| Epidural Needles |             |               |           |              |        |  |
|------------------|-------------|---------------|-----------|--------------|--------|--|
| Needle Gauge     | Needle Type | Length        | Connector | Product Code | Unit   |  |
| ● 16G            | Tuohy       | 80 mm (3.1")  | NRFit     | 24-1010-64   | 20/box |  |
| ● 16G            | Tuohy       | 110 mm (4.3") | NRFit     | 24-1011-64   | 10/box |  |
| ○ 17G            | Tuohy       | 90 mm (3.5")  | NRFit     | 24-1014-64   | 10/box |  |
| ● 18G            | Tuohy       | 50 mm (2.0")  | NRFit     | 24-1354-64   | 20/box |  |
| ● 18G            | Tuohy       | 80 mm (3.1")  | NRFit     | 24-1012-64   | 20/box |  |
| ● 18G            | Tuohy       | 90 mm (3.5")  | NRFit     | 24-1015-64   | 10/box |  |
| ● 18G            | Hustead     | 90 mm (3.5")  | NRFit     | 24-1016-64   | 10/box |  |
| ● 18G            | Tuohy       | 110 mm (4.3") | NRFit     | 24-1013-64   | 10/box |  |
| ● 19G            | Tuohy       | 50 mm (2.0")  | NRFit     | 24-1355-64   | 20/box |  |
| ● 20G            | Tuohy       | 90 mm (3.5")  | NRFit     | 24-1017-64   | 10/box |  |

| Portex Epidural Catheter Kits with NRFit Connector |        |                   |                |                    |                |              |        |
|--|--------|-------------------|----------------|--------------------|----------------|--------------|--------|
| Clear Catheter Type                                | Length | Catheter ID Label | Catheter Guide | Catheter Connector | Outer Diameter | Product Code | Unit   |
| 19G Closed-end 3 Eyes                              | 920 mm | •                 | •              | NRFit              | 1.05 mm        | 24-1033-22   | 10/box |
| 21G Closed-end 3 Eyes                              | 920 mm | •                 | •              | NRFit              | 0.85 mm        | 24-1034-22   | 10/box |
| 19G Closed-end 3 Closer Eyes                       | 920 mm | •                 | •              | NRFit              | 1.05 mm        | 24-1035-22   | 10/box |
| 21G Closed-end 3 Closer Eyes                       | 920 mm | •                 | •              | NRFit              | 0.85 mm        | 24-1036-22   | 10/box |

| Portex Epidural Single-Shot Packs with NRFit Connector |              |           |                                     |                                    |              |        |
|--|--------------|-----------|-------------------------------------|------------------------------------|--------------|--------|
| Tuohy Needle Gauge                                     | Length       | Connector | L.O.R. Syringe with NRFit Connector | Needle Filter with NRFit Connector | Product Code | Unit   |
| ● 16G  | 80 mm (3.1") | NRFit     | Plastic, 10 mL, Slip                | •                                  | 24-1206-22   | 10/box |
| ● 18G  | 80 mm (3.1") | NRFit     | Plastic, 10 mL, Slip                | •                                  | 24-1207-22   | 10/box |

| Portex Epidural Minipack Systems 1 with NRFit Connector |               |                       |           |   |  |                   |                          |   |              |        |
|---|---------------|-----------------------|-----------|---|--|-------------------|--------------------------|---|--------------|--------|
| Tuohy Needle Gauge                                      | Length        | With Attachable Wings | Connector | Clear Catheter with NRFit Connector & Guide | Plastic L.O.R. Slip with NRFit Connector | Catheter ID Label | With LockIt Plus™ Device | 0.2 µm Epidural Filter with NRFit Connector | Product Code | Unit   |
| ● 16G   | 80 mm (3.1")  | •                     | NRFit     | Closed-End 3 Eyes                           | 10 mL                                    | •                 | •                        | •   | 24-1300-22   | 10/box |
| ● 18G   | 80 mm (3.1")  | •                     | NRFit     | Closed-End 3 Eyes                           | 10 mL                                    | •                 | •                        | •   | 24-1301-22   | 10/box |
| ● 16G   | 80 mm (3.1")  | •                     | NRFit     | Closed-End 3 Eyes                           | 10 mL                                    | •                 | •                        | •   | 24-1302-22   | 10/box |
| ● 18G   | 80 mm (3.1")  | •                     | NRFit     | Closed-End 3 Eyes                           | 10 mL                                    | •                 | •                        | •   | 24-1303-22   | 10/box |
| ● 16G   | 110 mm (4.3") | •                     | NRFit     | Closed-End 3 Eyes                           | 10 mL                                    | •                 | •                        | •   | 24-1323-22   | 10/box |
| ● 18G   | 110 mm (4.3") | •                     | NRFit     | Closed-End 3 Eyes                           | 10 mL                                    | •                 | •                        | •   | 24-1324-22   | 10/box |
| ● 16G   | 80 mm (3.1")  | •                     | NRFit     | Closed-End 3 Closer Eyes                    | 10 mL                                    | •                 | •                        | •   | 24-1328-22   | 10/box |
| ● 18G   | 80 mm (3.1")  | •                     | NRFit     | Closed-End 3 Closer Eyes                    | 10 mL                                    | •                 | •                        | •   | 24-1325-22   | 10/box |
| ● 18G   | 50 mm (2.0")  | •                     | NRFit     | Closed-End 3 Closer Eyes                    | 10 mL                                    | •                 | •                        | •   | 24-1335-22   | 10/box |
| ● 19G   | 50 mm (2.0")  | •                     | NRFit     | Open-End                                    | 10 mL                                    | •                 | •                        | •   | 24-1334-22   | 10/box |

| Portex Epidural Minipack Systems 2 with NRFit Connector |              |                       |           |   |                   |   |              |        |  |
|---|--------------|-----------------------|-----------|---|-------------------|---|--------------|--------|--|
| Tuohy Needle Gauge                                      | Length       | With Attachable Wings | Connector | Clear Catheter with NRFit Connector & Guide | Catheter ID Label | 0.2 µm Epidural Filter with NRFit Connector | Product Code | Unit   |  |
| ● 16G   | 80 mm (3.1") | •                     | NRFit     | Closed-End 3 Eyes                           | •                 | •   | 24-1326-22   | 10/box |  |
| ● 18G   | 80 mm (3.1") | •                     | NRFit     | Closed-End 3 Eyes                           | •                 | •   | 24-1327-22   | 10/box |  |

### Portex Epidural Maxipacks with NRFit Connector

| Tuohy Needle (80 mm/3") with NRFit Connector | With Attachable Wings | L.O.R. Slip with NRFit Connector | Clear Catheter with NRFit Connector | Catheter Identification Label | 0.2 µm Epidural Filter with NRFit Connector | Product Code | Unit   |
|--|-----------------------|----------------------------------|-------------------------------------|-------------------------------|---|--------------|--------|
| ● 16G  | •                     | 10 mL Plastic                    | Closed-End 3 Eyes                   | •                             | •   | 24-1304-22   | 10/box |
| ● 18G  | •                     | 10 mL Plastic                    | Closed-End 3 Eyes                   | •                             | •   | 24-1305-22   | 10/box |

Prep components: 2 hand towels, 5 gauze swabs, 2 applicator sponges, and solution prep wells.  
 Other procedural components: fenestrated drape, 20 mL lock syringe with NRFit connector, 19G x 38 mm (1.5") filter needle with NRFit connector, catheter fixation sponge, filter device (luer), 3 mL plastic syringe, and hypodermic needles (22G x 40 mm—1.5" and 25G x 16 mm—5/8").



### Portex Epidural Flat Filter with NRFit Connector

| Filter Type | Connector | Membrane Pore Size       | Priming Volume | Product Code | Unit   |
|-------------|-----------|--------------------------|----------------|--------------|--------|
| Flat        | NRFit     | 0.2 µm hydrophilic 2-way | 0.8 mL         | 24-1000-64   | 10/box |



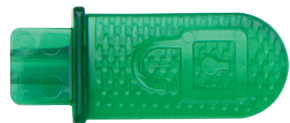
### Portex Filter Needle with NRFit Connector

| Type          | Connector | Product Code | Unit   |
|---------------|-----------|--------------|--------|
| Filter Needle | NRFit     | 24-1356-64   | 10/box |



### Caps with NRFit Connector

| Cap Type               | Connector | Product Code | Unit   |
|------------------------|-----------|--------------|--------|
| Yellow Female          | NRFit     | 24-1009-64   | 50/box |
| Yellow Male Non-Vented | NRFit     | 24-1004-64   | 50/box |



### Portex Catheter Connector Key for Use with NRFit Connectors

| Description                | Product Code | Unit   |
|----------------------------|--------------|--------|
| Key for Catheter Connector | 24-1055-64   | 50/box |



### EpiFuse Catheter Connectors with NRFit Connector

| Size    | Connector | Product Code | Unit   |
|---------|-----------|--------------|--------|
| 19G-21G | NRFit     | 24-1005-64   | 25/box |
| 24G     | NRFit     | 24-1047-64   | 25/box |



### Loss of Resistance (L.O.R.) Syringes with NRFit Connector

| Syringe Type | Connection | Connector | Capacity | Product Code | Unit   |
|--------------|------------|-----------|----------|--------------|--------|
| Plastic      | Slip       | NRFit     | 10 mL    | 24-1018-64   | 50/box |
| Plastic      | Slip       | NRFit     | 7 mL     | 24-1021-64   | 50/box |
| Plastic      | Lock       | NRFit     | 7 mL     | 24-1022-64   | 50/box |



### LockIt Plus Epidural Catheter Securement Device

| For Catheter Used With | Product Code | Unit   |
|------------------------|--------------|--------|
| 16G/17G needle         | 100/399/216  | 50/box |
| 18G needle             | 100/399/218  | 50/box |



### NRFit Syringes

| Description               | Product Code | Unit    |
|---------------------------|--------------|---------|
| NRFit Syringe, Lock 1 mL  | 15011010     | 100/box |
| NRFit Syringe, Lock 3 mL  | 15011030     | 100/box |
| NRFit Syringe, Lock 5 mL  | 15011050     | 100/box |
| NRFit Syringe, Lock 10 mL | 15011100     | 100/box |
| NRFit Syringe, Lock 20 mL | 15011200     | 50/box  |
| NRFit Syringe, Lock 60 mL | 15011600     | 25/box  |
| NRFit Syringe, Slip 1 mL  | 15021010     | 100/box |
| NRFit Syringe, Slip 3 mL  | 15021030     | 100/box |
| NRFit Syringe, Slip 5 mL  | 15021050     | 100/box |
| NRFit Syringe, Slip 10 mL | 15021100     | 100/box |
| NRFit Syringe, Slip 20 mL | 15021200     | 50/box  |

### Portex RapID™ Spinal Needle Sets—Pencil Point with NRFit Connector

| Spinal Needle | Length        | 18G x 34 mm (1.3") Introducer Needle with NRFit Connector | Product Code | Unit   |
|---------------|---------------|---|--------------|--------|
| ● 22G         | 90 mm (3.5")  | •   | 24-2000-64   | 20/box |
| ● 22G         | 152 mm (6.0") | •   | 24-2018-64   | 10/box |
| ● 24G         | 90 mm (3.5")  | •   | 24-2001-64   | 20/box |
| ● 25G         | 90 mm (3.5")  | •   | 24-2002-64   | 20/box |
| ● 25G         | 115 mm (4.5") | •   | 24-2007-64   | 10/box |
| ● 25G         | 152 mm (6.0") | •   | 24-2019-64   | 10/box |
| ● 26G         | 90 mm (3.5")  | •   | 24-2003-64   | 20/box |
| ● 26G         | 121 mm (4.8") | •   | 24-2005-64   | 10/box |
| ● 27G         | 90 mm (3.5")  | •   | 24-2004-64   | 20/box |
| ● 27G         | 121 mm (4.8") | •   | 24-2006-64   | 10/box |

### Portex RapID Spinal Needle Sets—Lancet Point with NRFit Connector

| Spinal Needle | Length        | 18G x 34 mm (1.3") Introducer Needle with NRFit Connector | Product Code | Unit   |
|---------------|---------------|---|--------------|--------|
| ● 22G         | 38 mm (1.5")  |   | 24-2022-64   | 20/box |
| ● 22G         | 90 mm (3.5")  | •   | 24-2008-64   | 20/box |
| ● 25G         | 90 mm (3.5")  | •   | 24-2010-64   | 20/box |
| ● 25G         | 115 mm (4.5") | •   | 24-2015-64   | 10/box |
| ● 25G         | 152 mm (6.0") | •   | 24-2021-64   | 10/box |
| ● 26G         | 90 mm (3.5")  | •   | 24-2011-64   | 20/box |
| ● 27G         | 90 mm (3.5")  | •   | 24-2012-64   | 20/box |

| Portex Spinal Midipack—Pencil Point with NRFit Connector |              |       |   |                   |                           |                          |                                   |  |              |        |
|--|--------------|-------|---|-------------------|---------------------------|--------------------------|-----------------------------------|--|--------------|--------|
| Spinal Needle  | Length       | RapID | 18G x 34 mm (1.3") Introducer Needle with NRFit Connector | 3 mL Luer Syringe | Intradermal Needle (Luer) | Hypodermic Needle (Luer) | 5 mL Syringe with NRFit Connector | Luer Filter Device & Needle with NRFit Connector | Product Code | Unit   |
| ● 25G  | 90 mm (3.5") | •     | •   | Slip              | 25G                       | 22G                      | Lock                              | •  | 24-2202-22   | 10/box |
| ● 25G  | 90 mm (3.5") | •     | •   | Slip              | 25G                       | 22G                      | Slip                              | •  | 24-2207-22   | 10/box |
| ● 27G  | 90 mm (3.5") | •     | •   | Slip              | 25G                       | 22G                      | Lock                              | •  | 24-2204-22   | 10/box |
| ● 27G  | 90 mm (3.5") | •     | •   | Slip              | 25G                       | 22G                      | Slip                              | •  | 24-2209-22   | 10/box |

| Portex Spinal Maxipacks—Pencil Point with NRFit Connector |       |                                   |   |              |        |
|---|-------|-----------------------------------|---|--------------|--------|
| Spinal Needle (90 mm/3.5") with NRFit Connector           | RapID | 5 mL Syringe with NRFit Connector | 18G x 34 mm (1.3") Introducer Needle with NRFit Connector | Product Code | Unit   |
| ● 25G   | •     | Lock                              | •   | 24-2200-22   | 10/box |
| ● 26G   | •     | Lock                              | •   | 24-2201-22   | 10/box |
| ● 25G   | •     | Slip                              | •   | 24-2205-22   | 10/box |
| ● 26G   | •     | Slip                              | •   | 24-2206-22   | 10/box |

Prep components: 2 hand towels, 5 gauze swabs, 2 applicator sponges, and solution prep wells.  
 Other procedural components: fenestrated drape, filter device (luer) and filter needle with NRFit connector, 3 mL plastic syringe luer slip, and hypodermic needles (22G x 40 mm—1.5" and 25G x 16 mm—5/8").

| Portex Combined Spinal/Epidural (CSE) Minipacks with NRFit Connector |                       |           |                             |                    |              |        |
|--|-----------------------|-----------|-----------------------------|--------------------|--------------|--------|
| Tuohy Needle (80 mm/3.1")  | With Attachable Wings | Connector | Spinal Needle (121 mm/4.8") | Spinal Needle Type | Product Code | Unit   |
| ● 16G  | •                     | NRFit     | 26G                         | Lancet             | 24-3100-22   | 10/box |
| ● 18G  | •                     | NRFit     | 27G                         | Pencil             | 24-3101-22   | 10/box |
| ● 16G  | •                     | NRFit     | 26G                         | Pencil             | 24-3102-22   | 10/box |
| ● 18G  | •                     | NRFit     | 26G                         | Pencil             | 24-3103-22   | 10/box |

Other procedural components: CSE needle set with NRFit connector, catheter (closed-end 3 eyes) and key with NRFit connector, filter (0.2 µm) with NRFit connector, 10 mL slip L.O.R. with NRFit connector, fixation sponge, catheter ID label.

# CADD Portfolio with the NRFit Connector

Complete NRFit Solutions from the Pump to Patient

## CADD-Solis™ Infusion Pump



## CADD 250 mL medication cassette reservoir with NRFit connector

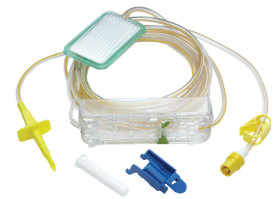




| CADD Medication Cassette Reservoirs with NRFit Connector  |              |              |        |  |
|---|--------------|--------------|--------|--|
| Description   | Length       | Product Code | Unit   |  |
| 100 mL yellow CADD medication cassette reservoir with NRFit female connector, flow stop, clamp and non-vented stopper | 20 cm (8 in) | 21-7600-24   | 12/box |  |
| 250 mL yellow CADD medication cassette reservoir with NRFit female connector, flow stop, clamp and non-vented stopper | 20 cm (8 in) | 21-7609-24   | 12/box |  |



| CADD Extension Sets with NRFit Connector  |                |                |              |        |
|---|----------------|----------------|--------------|--------|
| Description   | Length         | Priming Volume | Product Code | Unit   |
| CADD yellow striped extension set with NRFit male/male connector, integral anti-siphon valve and clamp  | 229 cm (90 in) | 2.3 mL         | 21-7605-24   | 12/box |
| CADD yellow-striped extension set with NRFit male/male connector, 0.2-micron air-eliminating filter and integral anti-siphon valve with clamp | 229 cm (90 in) | 2.4 mL         | 21-7608-24   | 50/box |



| CADD Administration Sets with NRFit Connector   |                 |                |              |        |
|---|-----------------|----------------|--------------|--------|
| Description   | Length          | Priming Volume | Product Code | Unit   |
| CADD yellow striped administration set, bag spike, flow stop, clamp and one-way checkvalve with NRFit male connector  | 312 cm (123 in) | 3.2 mL         | 21-7624-24   | 12/box |
| CADD yellow-striped administration set, bag spike, flow stop, 0.2-micron air-eliminating filter, clamp and one-way checkvalve with NRFit male connector             | 330 cm (130 in) | 6.0 mL         | 21-7649-24   | 12/box |
| CADD yellow-striped high volume administration set, bag spike, flow stop, clamp and one-way checkvalve with NRFit male connector                                    | 312 cm (123 in) | 16 mL          | 21-7684-24   | 15/box |
| CADD yellow-striped high volume administration set, bag spike, flow stop, 0.2-micron air-eliminating filter, clamp and one-way checkvalve with NRFit male connector | 340 cm (134 in) | 20 mL          | 21-7665-24   | 15/box |

NRFit is a registered trademark of GEDSA

ALWAYS READ THE LABEL AND FOLLOW THE DIRECTIONS FOR USE

© 2026 ICU Medical, Inc. | P26-6429-ANZ

**icu**medical  
human connections

[www.icumed.com](http://www.icumed.com)