

# Gripper Micro™ Safety Port Access Needles

## Needle Selection

The Gripper Micro safety port access needle is indicated for the administration or the withdrawal of fluids from implanted ports.

The Gripper Micro is a two-piece system that includes an inserter and an infusion site. After the needle is inserted into an implantable port, the inserter (sharp, having a Huber cut profile) is removed, leaving behind a small, low profile infusion site with a blunt cannula.

The Gripper Micro safety port access needles are available in 16–32 mm needle length.

### Length selection

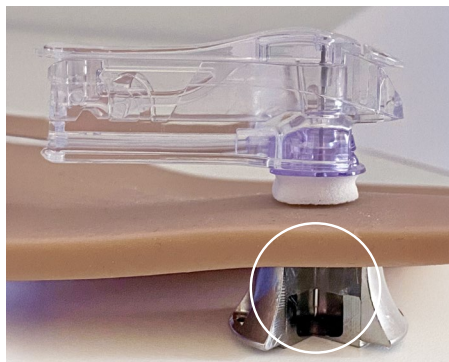
Needle length selection should only be made after an assessment of the patient's portal. The Gripper Micro needle length is measured from the plastic base to the tip of the inserter. The foam is included in the measurement length.

### Needle length determination

- › The inserter tip should be long enough to reach the reservoir floor of the portal when inserted.
- › The foam cushion of the Gripper Micro safety port access needle should lie flat against the skin surface; neither the skin nor the cushion should be compressed under the base.

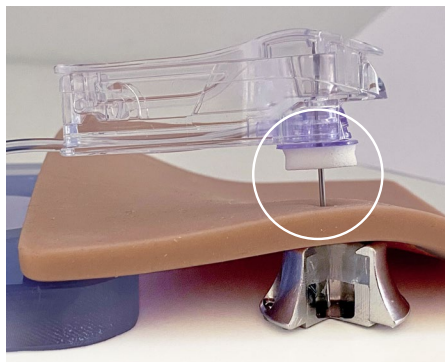
### Gauge selection

- › The Gripper Micro safety port access needle is available in 19, 20, and 22 gauge sizes.
- › Gauge size selection depends on therapy: Access with smallest-gauge Gripper Micro to accommodate the prescribed therapy.



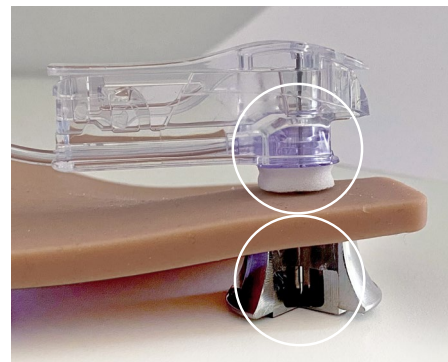
### Too short

The inserted Gripper Micro is too short if it does not reach the reservoir floor of the portal. This may result in restriction of flow, obstruction of flow or leakage of the fluid into the tissue surrounding the port.



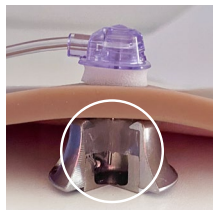
### Too long

The inserted Gripper Micro is too long for the portal if the infusion site and cushion do not rest flat on the skin.



### Correct length

The inserted Gripper Micro is correct if the infusion site and cushion lie flat against the skin and the tip of the inserter touches the reservoir floor. When confirmed, the activation of the safety can take place, leaving the infusion site with a blunt cannula.



**Note:** The inserter will be removed prior to dressing, leaving a small space between the cannula blunt tip and the portal septum. This is intended and will not risk any unintended needle retention during use.

Rx Only. For safe and proper use, refer to the Instructions for Use.