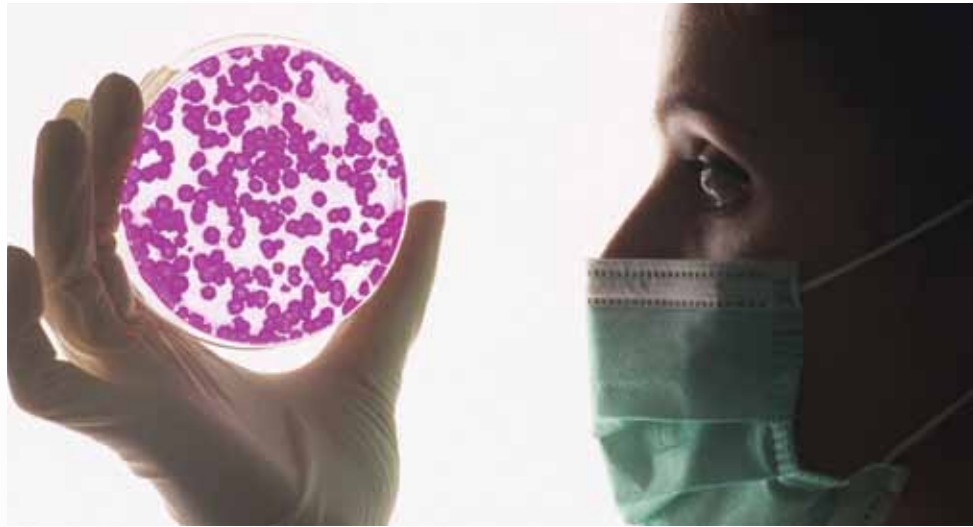


Now isn't the time to ask "Does my blood sampling system protect against pathogens?"



*Safeset, blood sampling system that protects both your patient and you.*



**SAFESET™**  
BLOOD SAMPLING SYSTEM

- Safe, convenient blood withdrawal from pressure monitoring lines.
- Protects against exposure to bloodborne pathogens and IV line contamination.
- Reduces blood waste and the risk of iatrogenic anemia.
- Increases the efficiency and safety of the blood sampling process.
- Available as a standalone system or in standard or custom pressure monitoring kits.



# Accessibility for blood sampling that protects you and your patients

Encapsulated internal sheath guards against touch contamination

Hard exterior reservoir protects internal sheath from removal and tearing

Positive stop on reservoir enhances safety, and locking mechanism ensures functionality when monitoring

12 cc reservoir provides large clearing volume for OR applications

## Luer Activated Stopcock

- Access with any luer-tipped device
- Minimal deadspace is easily flushed
- No impact on dynamic response



The luer activated stopcock continuously flushes residual volume.

## In-line Integration

- Safe, convenient blood withdrawal from pressure-monitoring lines
  - Engineered to optimize dynamic response when used with Transpac<sup>®</sup> IV pressure-monitoring kit
- May reduce risk and expense associated with blood waste
  - Discard or clearing volume can be reinfused, which may reduce blood transfusions due to phlebotomy



## Multiple Standard Configurations

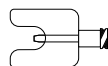
- Adult and neonatal/pediatric
- Various single-, double-, and triple-line options
- Available in any custom pressure monitoring kits

## SAFESSET™ Product Specifications

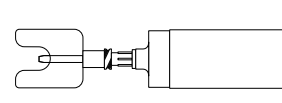
Pressure tubing: Internal volume, .055 mL/in  
 Reservoir: Adult, 12 mL (graduated to 10 mL); Neonatal/pediatric, 3 mL (graduated)  
 Without Latex Components: Yes

## SAFESSET™ Accessories

42303-02  
Shielded Blunt Cannula



42327-02  
Shielded Blunt Cannula with Tube Holder



**CAUTION:** Federal (U.S.A.) Law restricts this device to sale by or on the order of a physician or other licensed practitioner.  
 M1-1226 Rev. 02